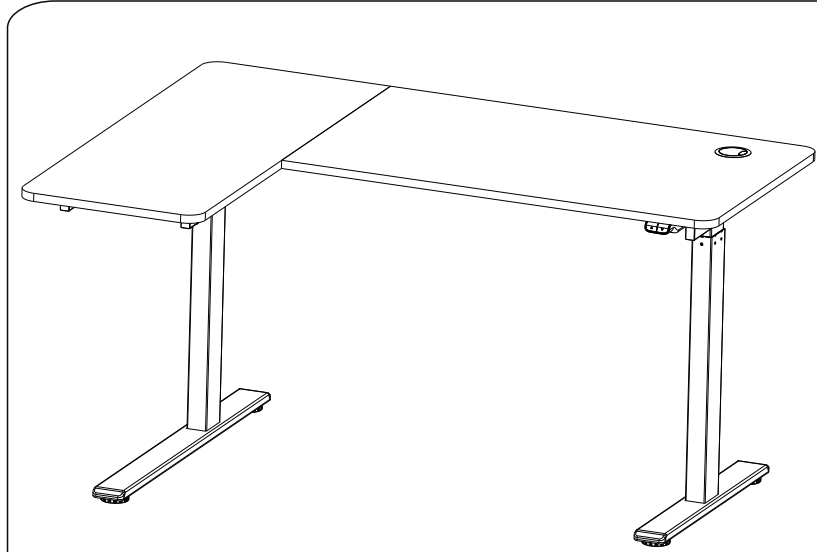


# Instruction Manual









## E-Zee L Ergo Sitstand Desk



Technical data	
Product No.	ET116L
Column Design	Standard, 2 segments
Max. Load Capacity	50KG
Max. Speed	25mm/s
Highest Position	1230mm
Lowest Position	730mm
Stroke	500mm
Inner Tube	70mmx40mmx2mm
Outer Tube	75mmx45mmx1.5mm
Tabletop Dimensions	1400mmx1060mmx18mm Particle Board

### Accessory list

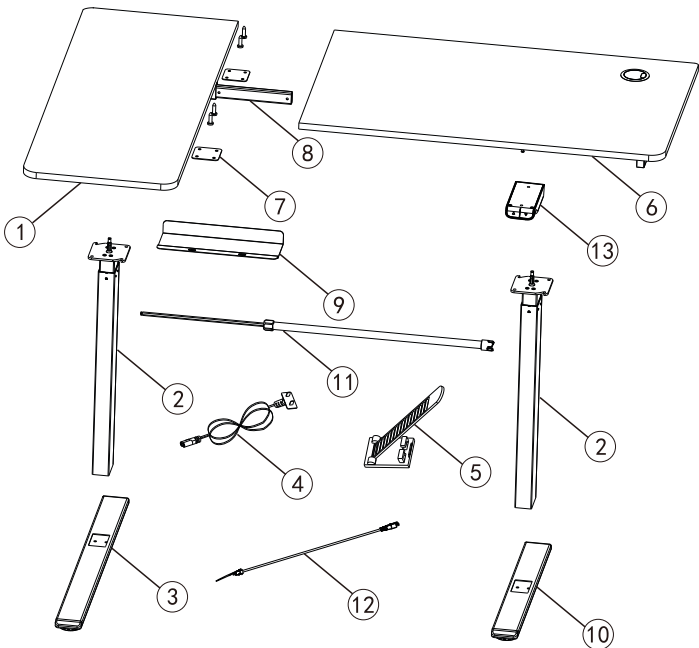
Attention: The drawings below are for guidance only and they may differ slightly from the product and fittings received. Please contact customer service department if there are any missing tools or installation problems.

<b>A</b> x2	<b>B</b> x2	<b>C</b> x8	<b>D</b> x4	<b>E</b> x8	<b>F</b> x1	<b>F</b> x1	<b>G</b> x1
							
M8x6	M8x10	ST4.2x13	M6x12	M6x16	5x5(with cross)	4x4	Wrench

### Component List

No.	Part	Qty	No.	Part	Qty
①	Left Tabletop	1	②	Columns	2
③	Left Pedestal	1	④	Power Plug	1
⑤	Cable Tie	4	⑥	Right Tabletop	1
⑦	Tabletop Connecting Sheet Metal	2	⑧	Connecting Tube	1
⑨	Decorative Cover	1	⑩	Right Pedestal	1
⑪	Transmission Rod	1	⑫	Switch Cord	1
⑬	Handset	1			

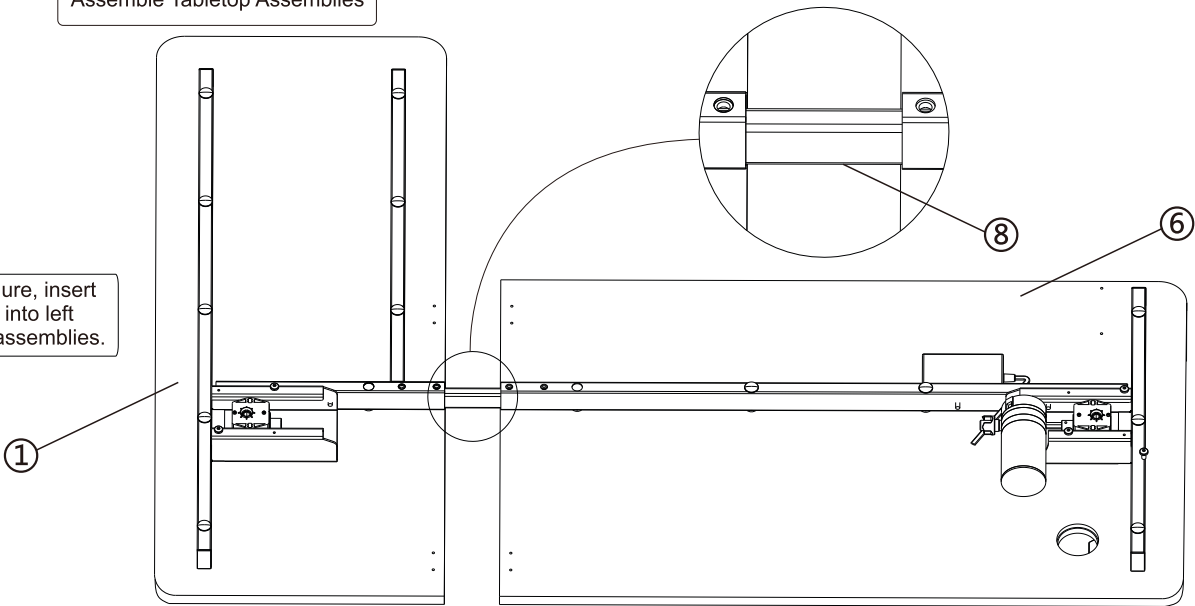
### Installation Diagram



### STEP1

#### Assemble Tabletop Assemblies

As shown in the figure, insert connecting tube(8) into left and right tabletop assemblies.



### STEP2

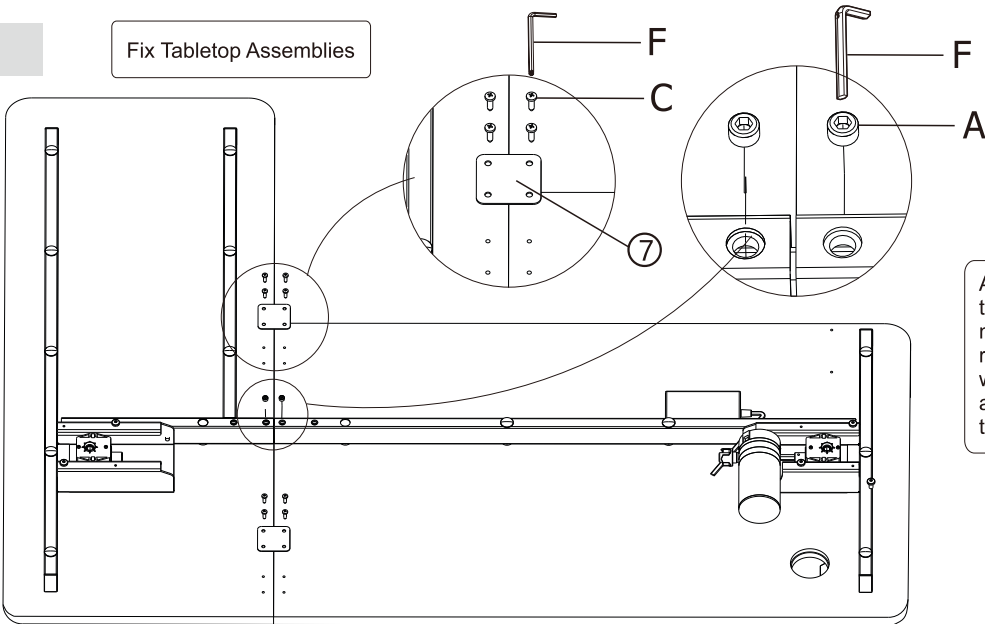
#### Fix Tabletop Assemblies

**A** x2  
M8x6

**C** x8  
M8x10

**F** x1  
5x5

**F** x1  
4x4

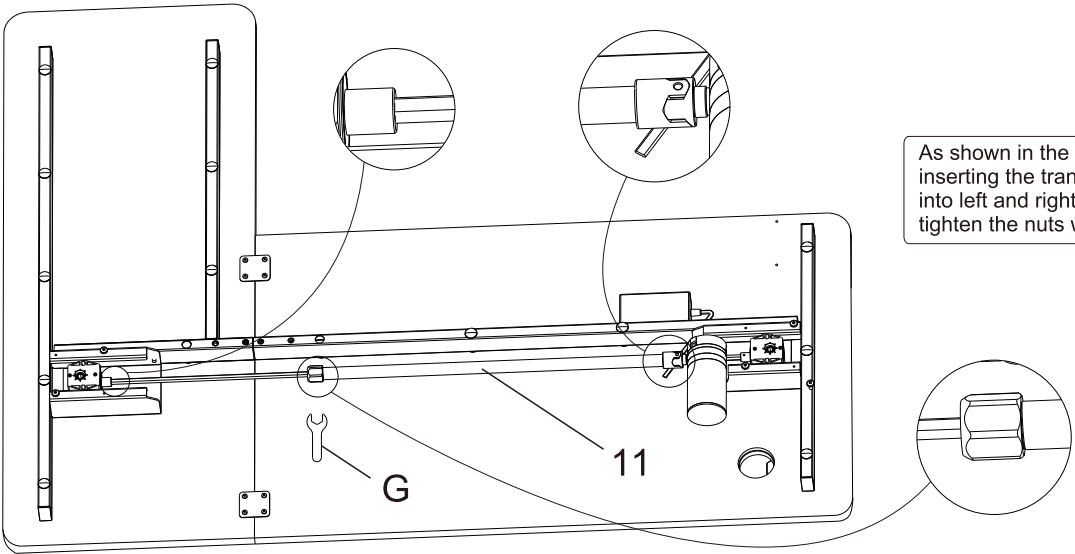


As shown in the figure, fix the connecting sheet metal (7) on the left and right tabletop assemblies with ST 4.2 x 13 screws(C), and use a 4 x 4 allen key(F) to tighten M8x6 screws (A).

### STEP3

#### Install Transmission Rod

**G** x1  
Wrench



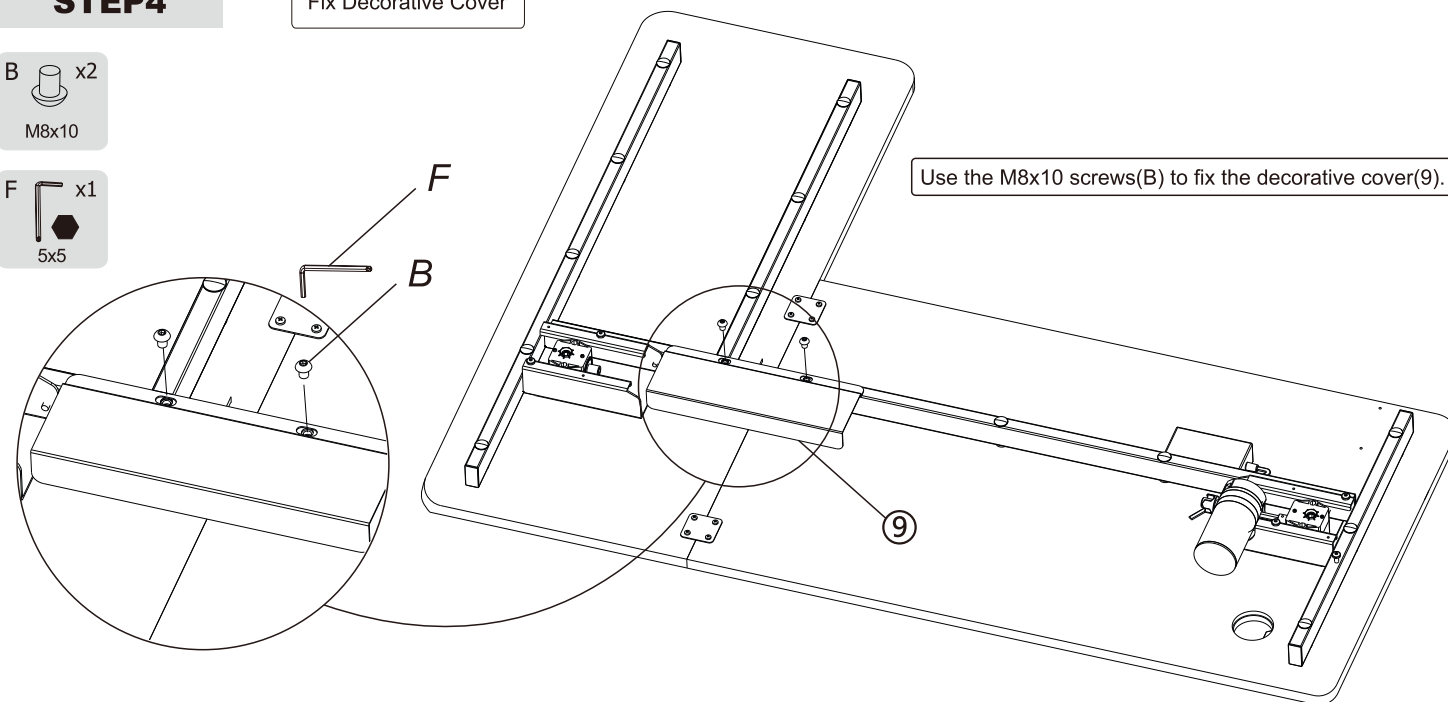
As shown in the left figure, after inserting the transmission rod (11) into left and right tabletop assemblies, tighten the nuts with the wrench (G).

#### STEP4

Fix Decorative Cover

B x2  
M8x10

F x1  
5x5

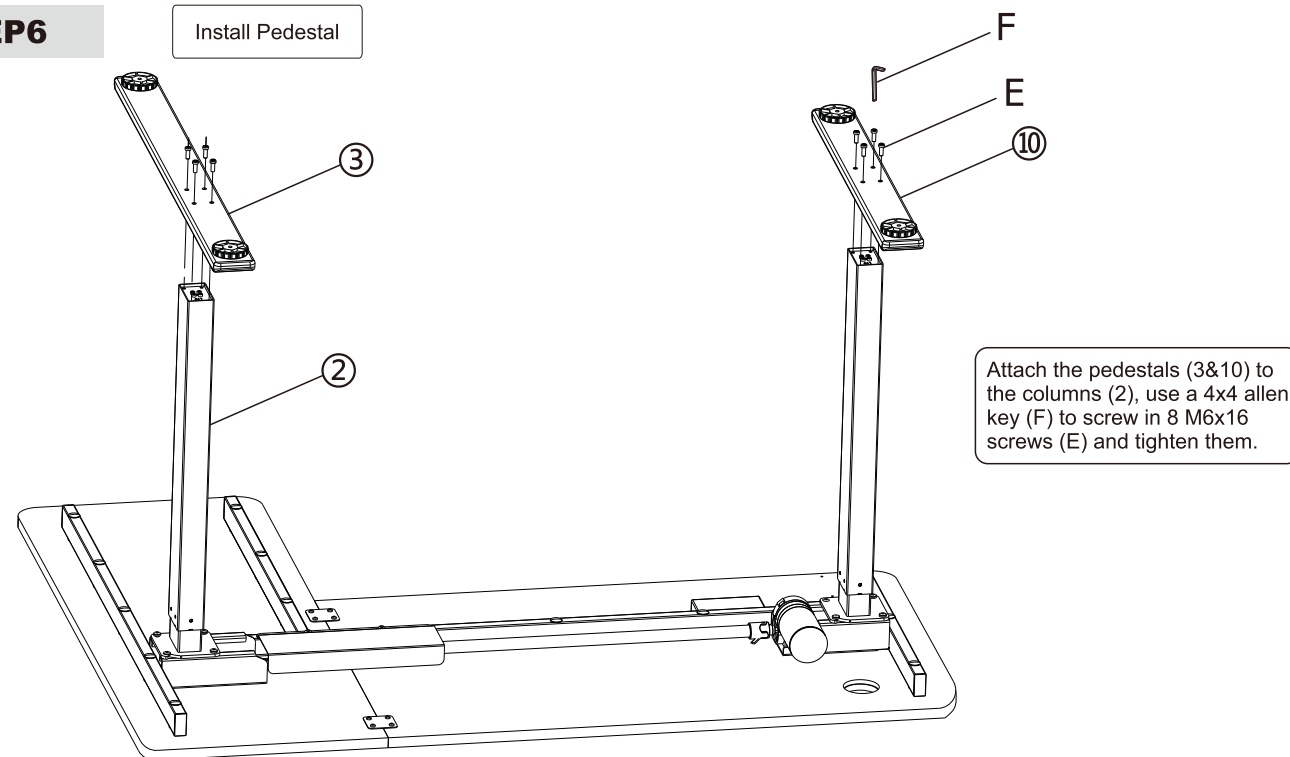


#### STEP6

Install Pedestal

E x8  
M6x16

F x1  
4x4



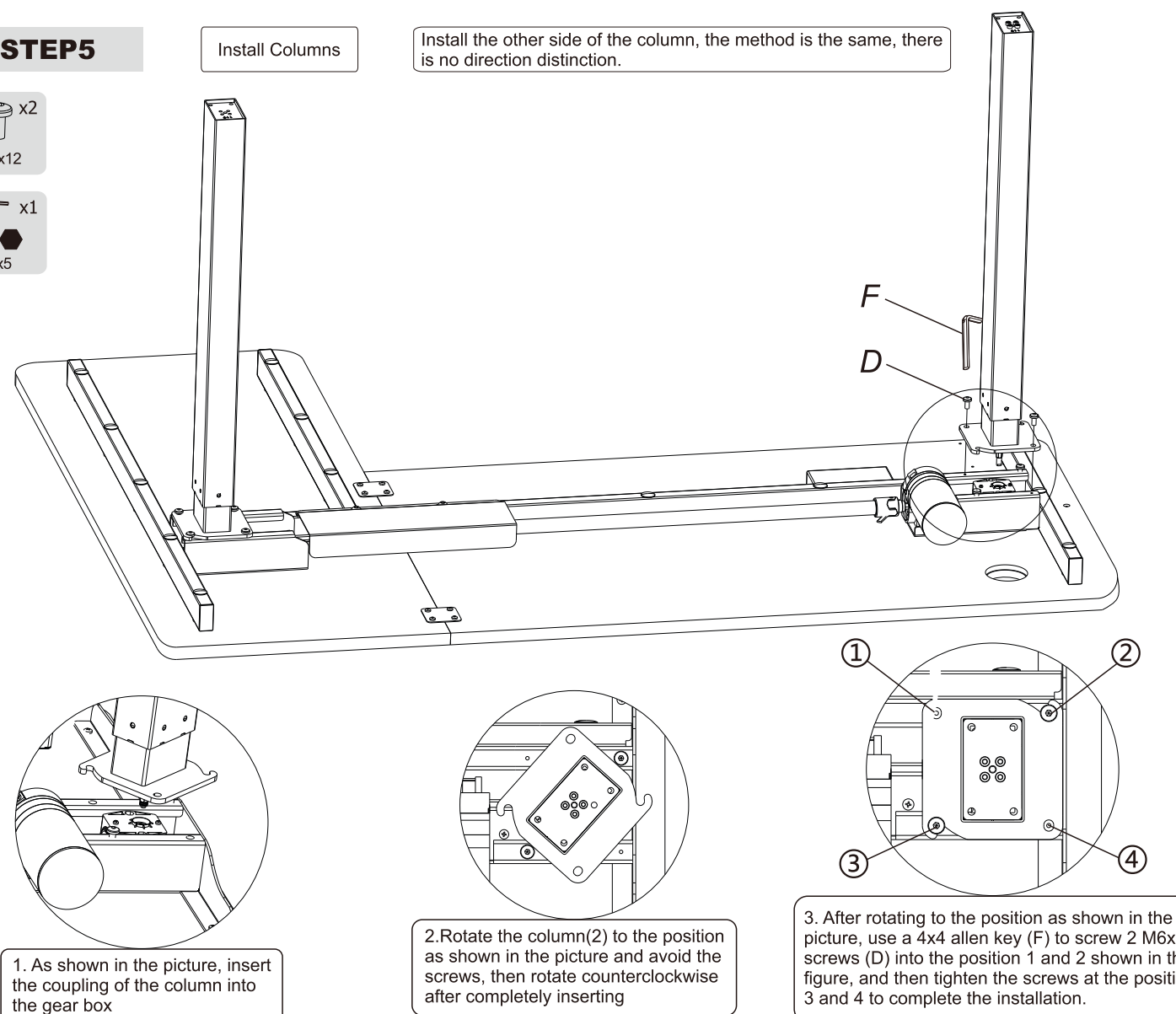
#### STEP5

Install Columns

Install the other side of the column, the method is the same, there is no direction distinction.

D x2  
M6x12

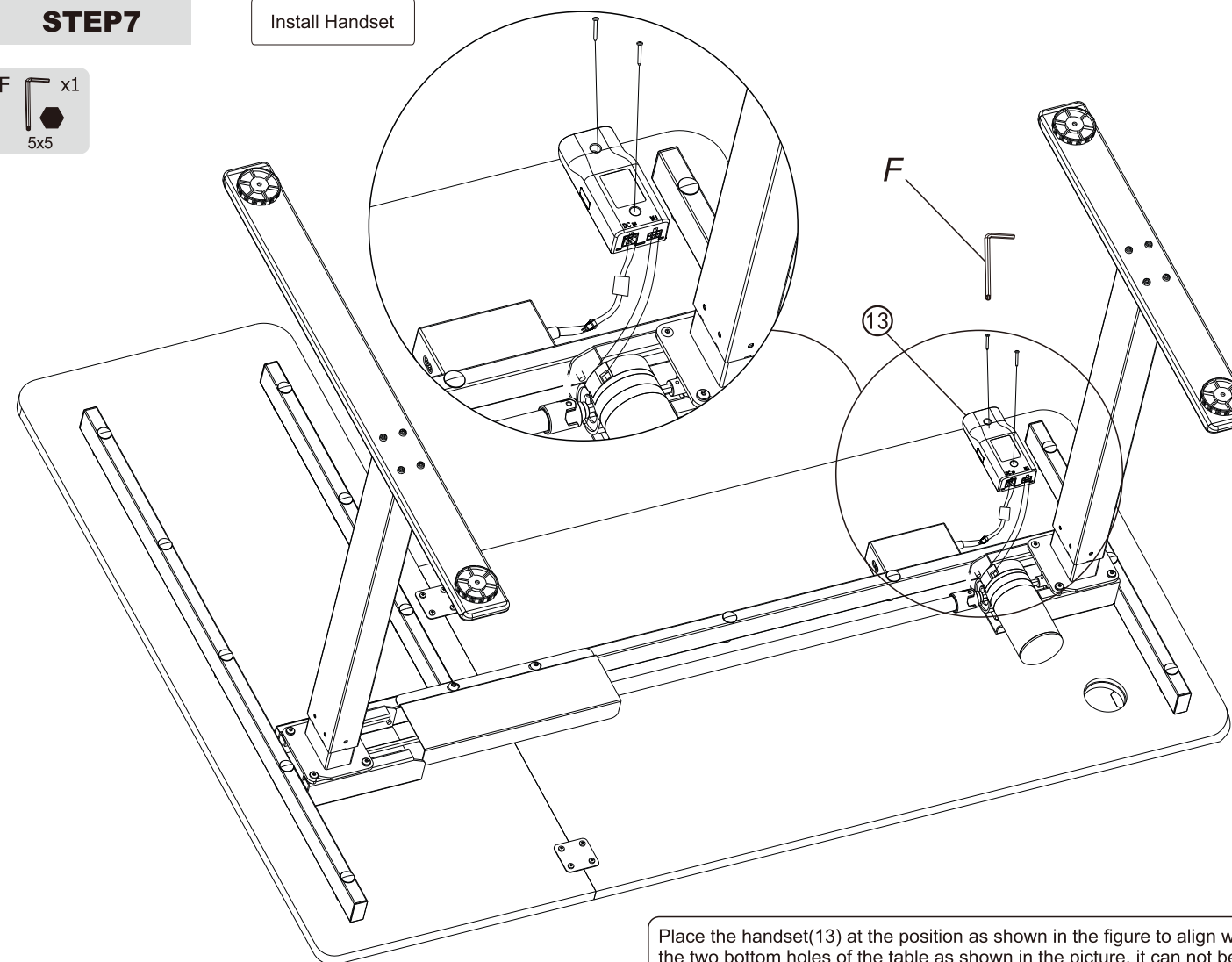
F x1  
5x5



#### STEP7

Install Handset

F x1  
5x5

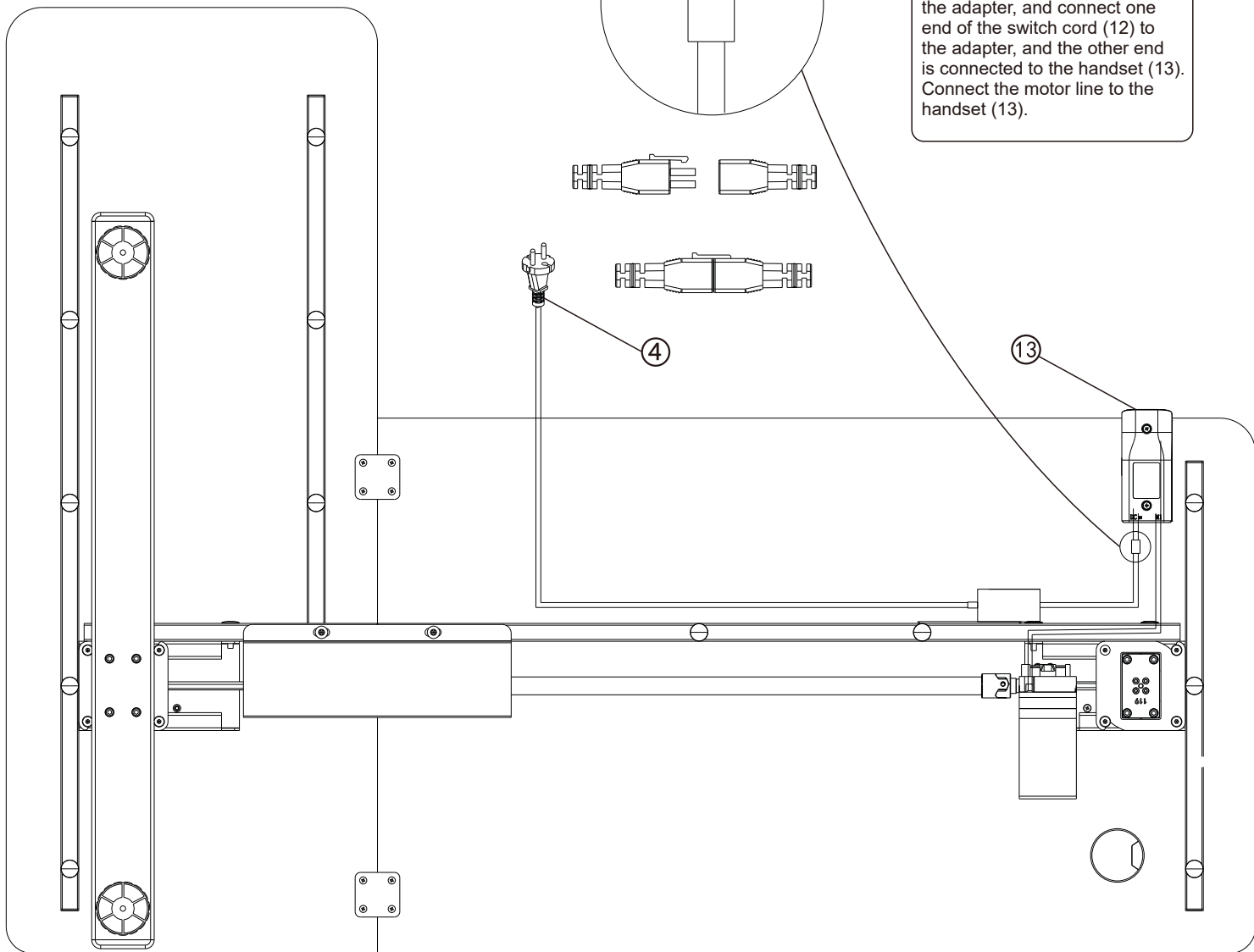


## STEP8

### Wiring Cables

A  
5:1

Connect the power plug(4) to the adapter, and connect one end of the switch cord (12) to the adapter, and the other end is connected to the handset (13). Connect the motor line to the handset (13).



### How to use handset

- |   |     |                           |
|---|-----|---------------------------|
| ● | “▲” | Adjust the desk upwards   |
| ● | “▼” | Adjust the desk downwards |

### Operation

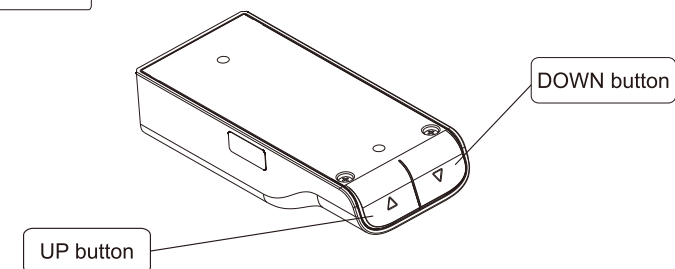
- Button Lift Function  
Press the“▲”or“▼” button to adjust the height of the desk.
- Reset Function  
(1) When at the lowest position, long press the “▼” button for more than 5 seconds to enter the reset mode. The reset will be finished until the lift system rebound and stop after reaching the bottom.  
(2) When the lifting system fails, release the button, long press the “▼” button, the reset will be finished until the lift system rebound and stop after reaching the bottom.

### Common fault treatment

The following tips will help you detected and eliminate the common fault and error. If the fault you met is not listed below, please contact with your supplier. Only the manufacturer and professionals are capable for investigating and correcting those fault and error.

Fault phenomenon	Method
No response while long pressing down arrow after connected with a power supply	1.Check if all the cables be connected well 2.Contact your supplier or dealer
The desktop could not be lifted	1.Check if overloaded, max loading: 50kg 2.Contact your supplier or dealer
Overwork (Duty cycle:Max 2min on/30min OFF)	1.Restart it after suspend for 30mins for the working time is too long 2.Contact your supplier or dealer

### Button



### Attention

- Power supply: AC100V~240V,50/60HZ
- Service Environment: 0-40℃
- Unplug the power plug before cleaning, wipe the dust on surface with slight wet dishcloth when cleaning, be careful not to let the drops into the internal parts, not loose the connector.
- The electric box contains electronic components, metals, plastics, wires etc., so dispose of it in accordance with each country's environmental legislation, not the general household waste.
- Check carefully to ensure correct and complete assembly before using.
- Be familiar with all functions and program settings of the product before first use.
- Children are forbidden to play on the product because of unforeseen action when playing, so any dangerous consequences caused by this improper action will not be on manufacturers.
- Slight noise caused by the V-ribbed belt or brake system due to structure will not have any effect on the use of the equipment.
- Corrosive or abrasive materials are forbidden to clean the equipment. Must ensure that the cleaner used will not pollute the environment.
- Please make sure there is no hazard sources in your operating environment. e.g., do not litter the tools around. Always be careful to treat the packaging materials in order to avoid any possible danger, e.g. plastic bag may lead to choking hazard to children.
- Keep the original package of the equipment if necessary in case of the future use in transportation.
- The following tips will help you detected and eliminate the common fault and error. If the fault you met is not listed below, please contact with your supplier. Only the manufacturer and professionals are capable for investigating and correcting those fault and error.

### Waste disposal



This marking indicates that this product should not be disposed with other household wastes. To prevent possible harm to the environment or human health from uncontrolled waste disposal, recycle it responsibly to promote the sustainable reuse of material resources. To return your used device, please use the return and collection systems or contact the retailer where the product was purchased. They can take this product for environmental safe recycling.